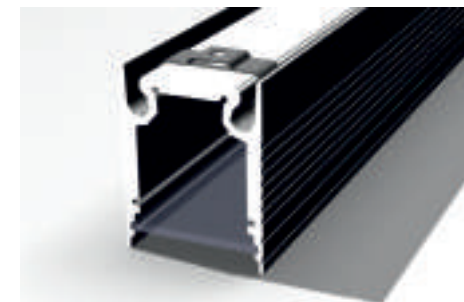


**Applicazioni:**

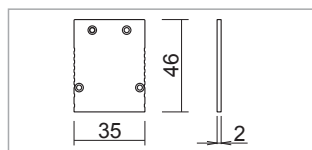
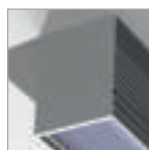
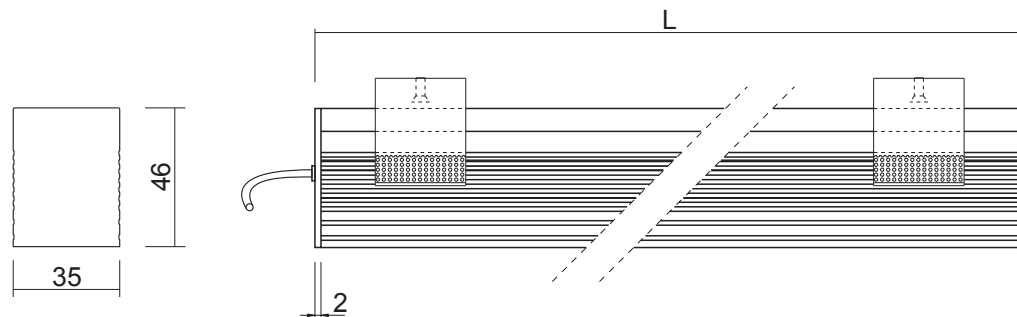
- Illuminazione generale e architettonica
- Sostituzione illuminazione lampade fluorescenti
- Retroilluminazione
- Profilo a plafone con effetto di luce continuo ed omogeneo dato dal posizionamento interno della strip LED.

**Caratteristiche:**

- Profilo in alluminio anodizzato
- Profilo completo di diffusore opale e trasparente e testate di chiusura.
- **Lunghezza barre disponibile fino 4mt.**

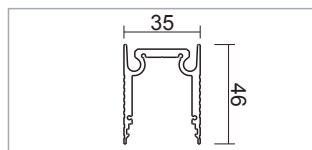


**Disegno tecnico con unità di misura in mm**

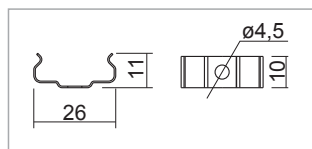


14300 | TAP-35x46-CH | Tappo chiuso completo di accessori

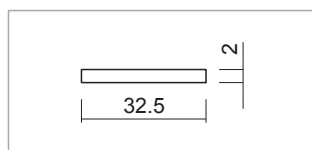
**Imballo standard barre 2mt**



14301 | CAS-35x46-L4 | Profilo Cassaforma 35x46mm

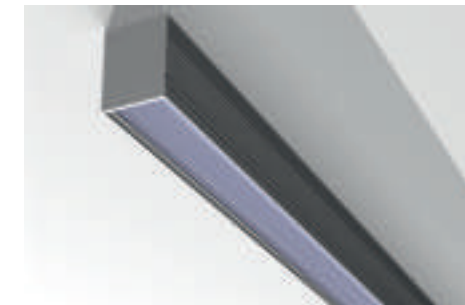
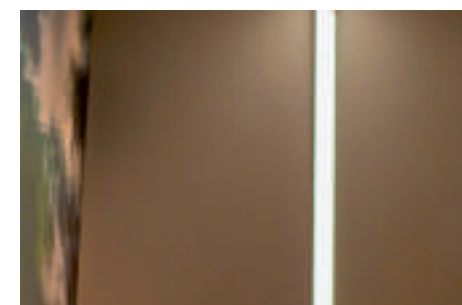


14043 | MOFIRE-9.5x10.5 | Molletta di fissaggio posteriore



14370 | COPTR-33x2-L4 | Copertura trasparente

14371 | COPOP-33x2-L4 | Copertura opalina



**BHP Energy México S. de R.L de C.V.**

Representante Exclusivo

Tel: +52 55 5251 2008 / ventas@bhpenergy.mx

www.bhpenergy.mx

© 2016 BHP Energy México Todos Los Derechos Reservados