

The Lucy Lamp



The first plug and play LED replacement
for high-pressure sodium.

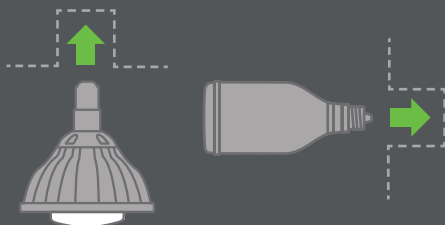
Now you can easily replace HPS lamps with energy-saving LED
lighting. Experience the transformation as the yellow sodium haze
gives way to beautiful light.





Plug and play

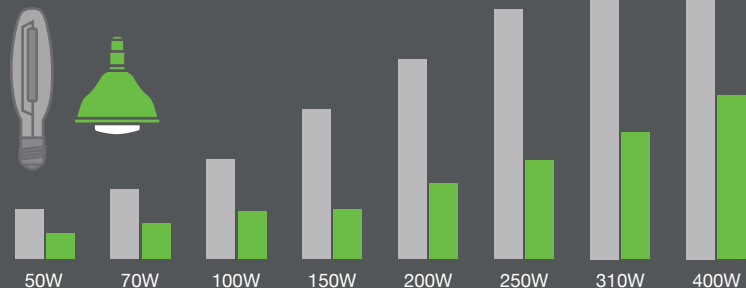
Just screw the lamp into your existing HPS fixture. No need to bypass the ballast. Vertical and horizontal configurations fit pole mount shoebox fixtures and wall packs. Mogul and medium base options are available.



Options available for vertical and horizontal configurations.

Big energy savings

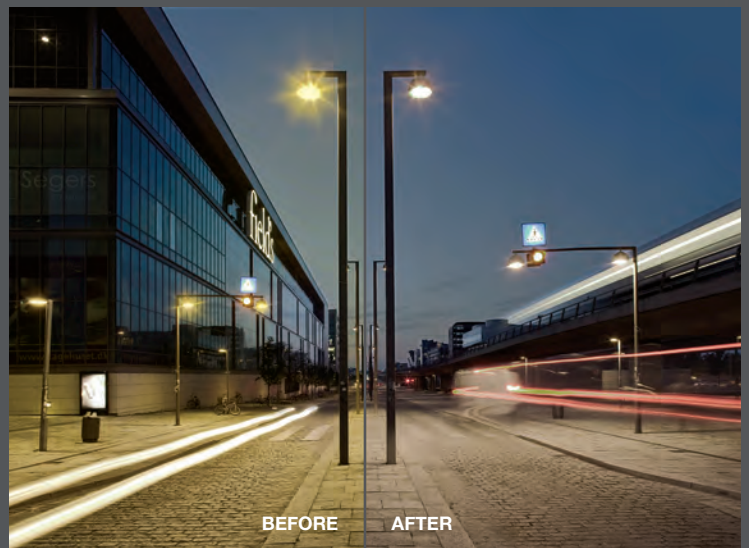
Enjoy 60%-70% energy savings compared with HPS lamps. Plus, the Lucy Lamp lasts 2x longer, saving multiple replacement cycles.





Full spectrum of benefits

Unlike the yellow haze of HPS, the Lucy Lamp renders beautiful, high quality white light. It instantly transforms your environment and enables people to clearly perceive a full range of colors.



Experience the transformation



BEFORE



AFTER

Lucy Lamp Highlights

Input Voltage	Driven by HPS ballast	Energy Savings	60%-70%
CRI	>80	Warranty	5 years
Color Temp	4000K	Compatibility	Vertically mounted medium base (E26) and mogul base (E39/EX39) MH sockets, driven by magnetic ballasts only
Life	50,000 hours life (L70)		

Vertical Medium Base (E26)

Installed Ballast	150W	100W	70W	50W
Power	50W	48W	36W	26W
Delivered Lumens	4,800 lm	4,600 lm	3,800 lm	2,900 lm

Vertical Mogul Base (E39)

Installed Ballast	400W	310W	250W	200W
Power	164W	127W	99W	76W
Delivered Lumens	13,000 lm	11,000 lm	9,000 lm	8,000 lm

Horizontal Mogul Base (E39)

Installed Ballast	400W	310W	250W	200W
Power	118W	105W	83W	63W
Delivered Lumens	9,400 lm	8,200 lm	6,800 lm	5,700 lm

Representante Exclusivo

Bosque de Duraznos #69 - Torre B 1107-A
 Col. Bosques de las Lomas, México DF. 11700
 Tel: +52 55 5251 2008
 info@bhpenergy.mx / ventas@bhpenergy.mx

© 2015 BHP Energy México Todos Los Derechos Reservados
 www.bhpenergy.mx



REV 0415